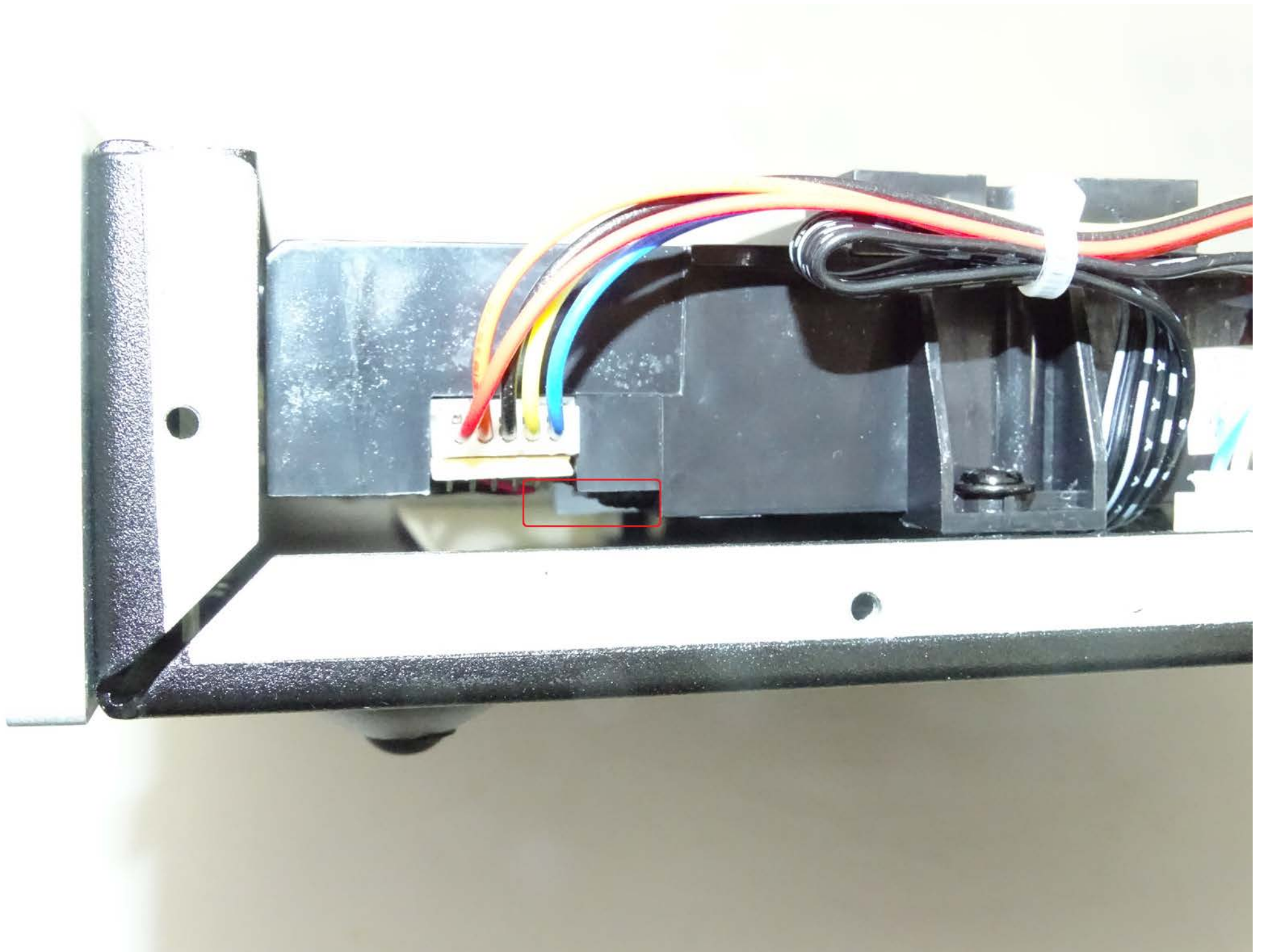


1. Disassembling Top Cover:

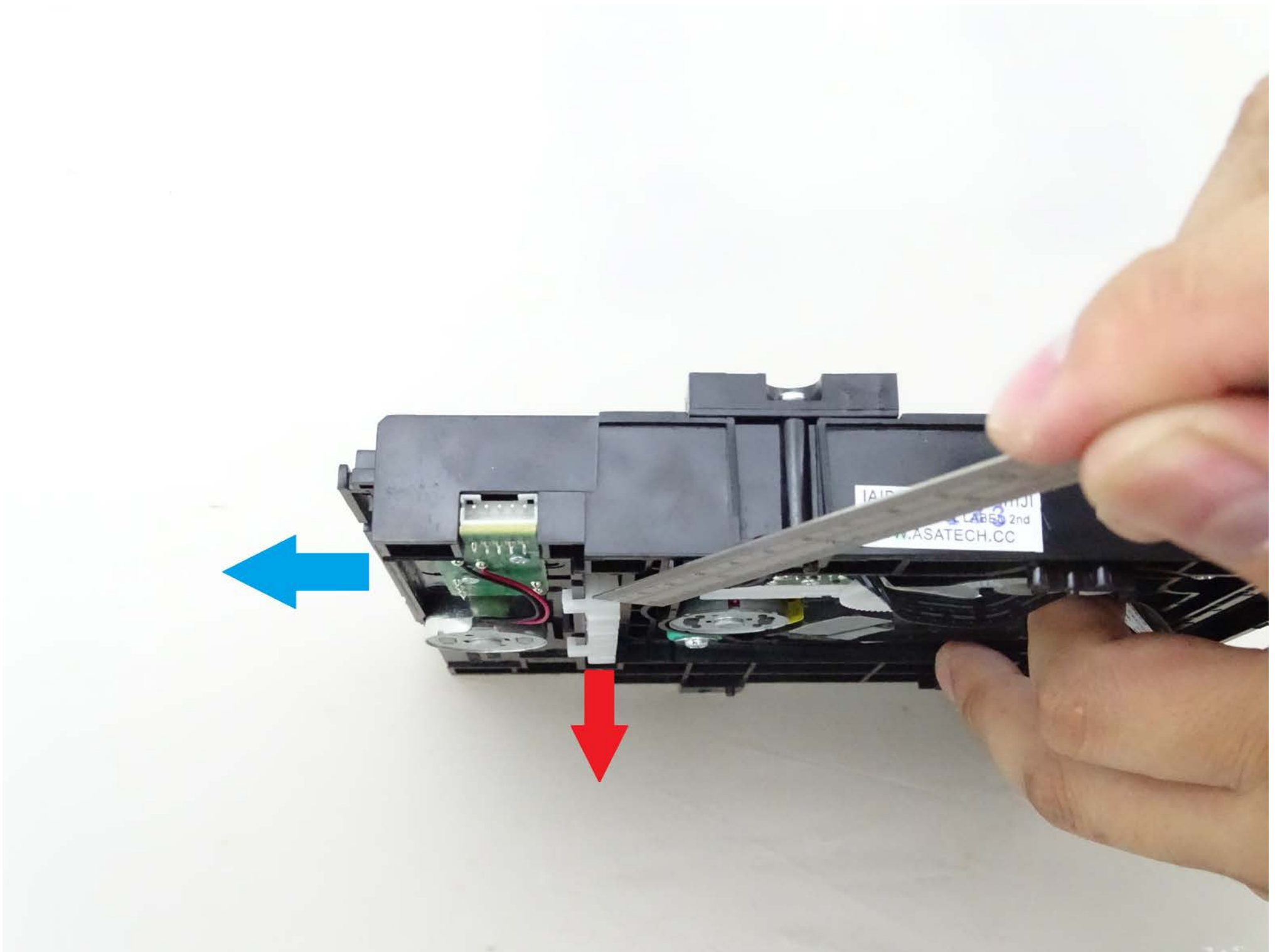
Step 1: Please remove the 8 screws on both sides of the unit, 4 on each side. Once the screws are removed, top cover can now be gently removed from the main unit.



Step 2: Locate the white slider on the right side of the CD loader. Please see the photo below and check the white slider marked with red rectangle.

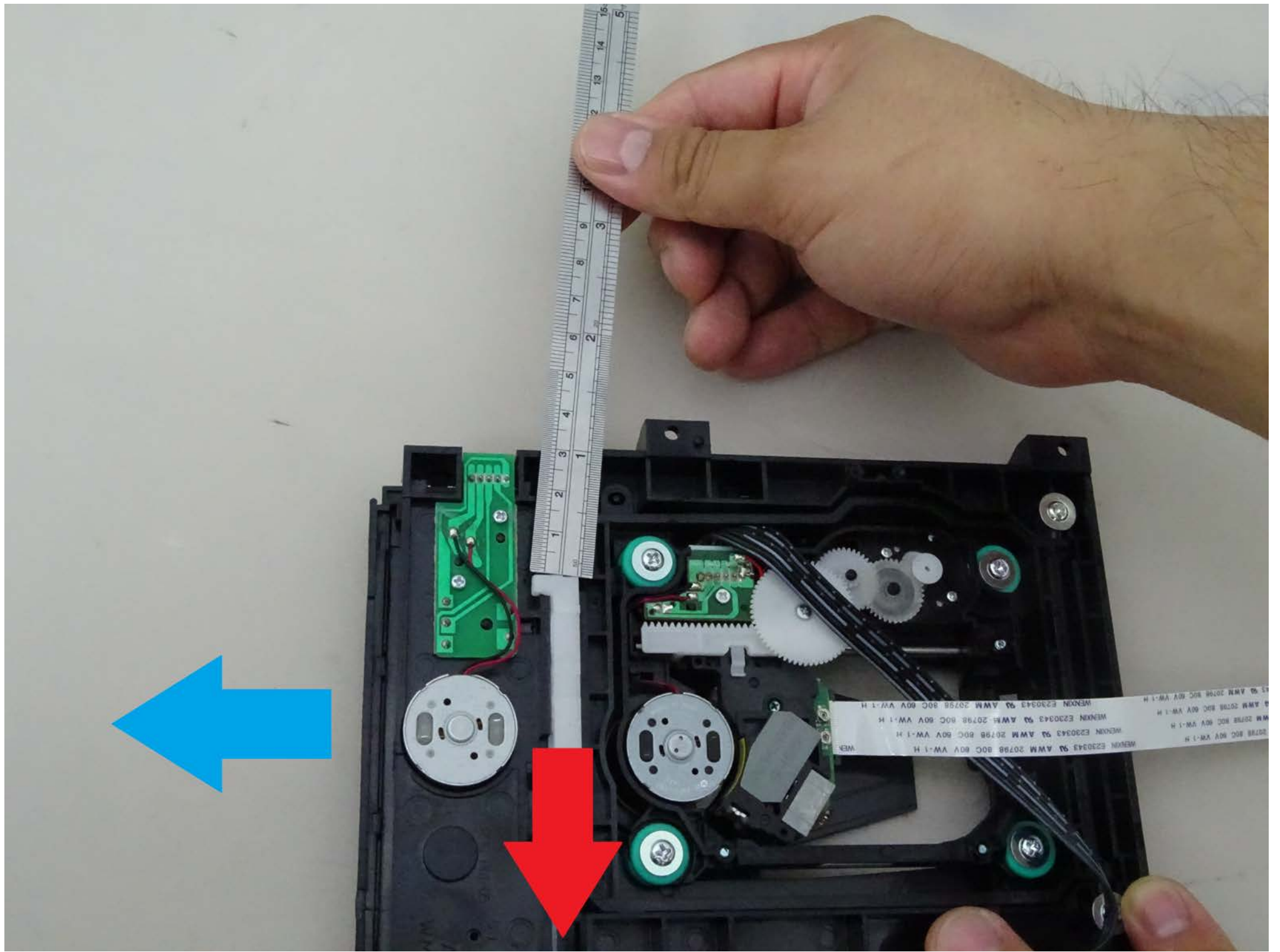


Step 3: Make sure the power is not connected, use a flat head screw driver or a flat ruler and push the white slider down. This will force the CD tray to eject.





(Underneath view)



Step 4: Once the stuck CD is removed, push back the CD tray, reassemble the top cover.