

# NuPrime DSD Playback Guide

## To run the NuPrime on Mac– PCM:

1. Power on NuPrime product, select USB input. The device will enumerate as a USB Audio device on your Mac.
2. In Audio MIDI Setup, select the “NuPrime product” device as your default Input and Output device.
3. The sample rate of the device can be selected using the drop down menu.
4. The audio is also output over SPDIF.

## To run the NuPrime on Mac– DSD:

1. Install playback software on MAC.  
Ex: Audirvana 15 days free [https://audirvana.com/?page\\_id=3397](https://audirvana.com/?page_id=3397)
2. In Preferences Setup, Audio System selects the “NuPrime Product” as your Default Device.
3. The Native DSD Capability select the “DSD Over PCM standard 1.0”
4. SPDIF output is not working on DSD playback.

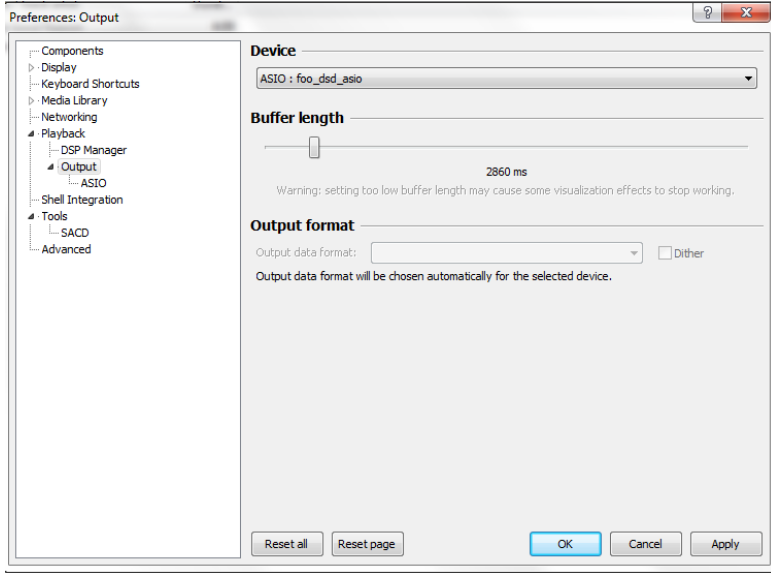
## To run the NuPrime product on Windows – PCM:

1. Power on NuPrime product, select USB input. The device will enumerate as a USB Audio device on your PC.
2. Install the nuprime \_DriverSetup\_v1.00.
3. In Control Panel->Sound, select “NuPrime Product” as your Default Device.
4. The audio is also output over SPDIF.

## To run the NuPrime USB DAC on Windows – DSD

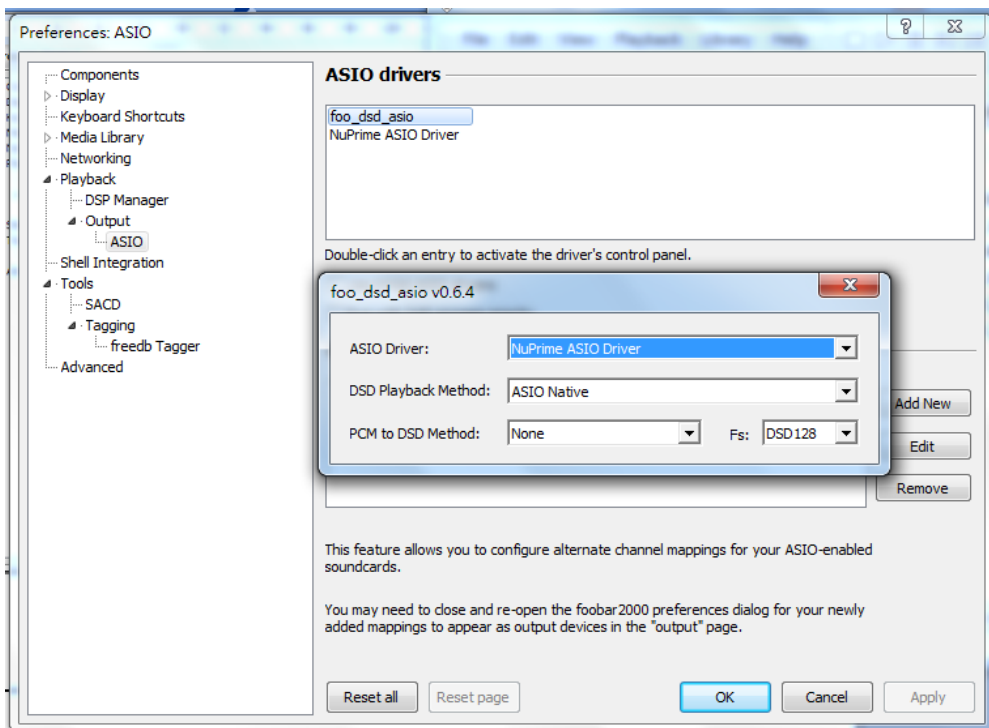
Install playback software on Windows

1. Install the Foobar media player  
<http://www.foobar2000.org/getfile/079dd178a05e1c51445e77506daa5dd2/>
2. Download the ‘SACD’ plugin  
[https://sourceforge.net/projects/sacddecoder/files/foo\\_input\\_sacd/](https://sourceforge.net/projects/sacddecoder/files/foo_input_sacd/) (Please do not install the newest version)
  - a. Go to the downloaded folder and install ASIO ProxyInstall-0.6.5.exe by double click on the file
  - b. Once the ASIO ProxyInstall-0.6.5.exe is installed, go ahead and install the plugin foo\_input\_sacd.fb2k-component.
  - c. Click Apply (foobar will restart)
3. Download the ASIO plugin from [http://www.foobar2000.org/components/view/foo\\_out\\_asio](http://www.foobar2000.org/components/view/foo_out_asio)
  - a. Install the plugin
  - b. Click Apply (foobar will restart)
4. Configure the Output Device
  - a. Goto Playback->Output
  - b. Select the Device: ASIO foo\_dsd\_asio



## 5. Configure the ASIO output

- a. Go to Playback->Output->ASIO, double-click on foo\_dsd\_asio
- b. Select the NUPRIME ASIO Driver
- c. Select ASIO Native
- d. Select PCM to DSD Method: None
- e. Select Fs: DSD256



## 6. Configure the SACD plugin to play DSD (and not convert from DSD to PCM)

- a. Goto Tools->SACD
- b. Set ASIO Driver Mode to DSD
- c. Set PCM Sample Rate to 352800

